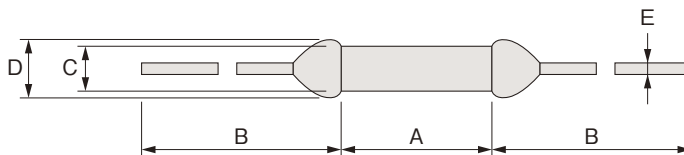


12シリーズ 12 Series



上記写真は12Jです。
The photo of 12J is shown.



■寸法 Dimensions

種類 Lead length	寸法 Dimensions (mm)				
	A	B	C	D	E
レギュラー Regular	9.0±0.5	38±3	2.5±0.1	3.0以下 3.0 or below	0.6±0.05
ロング Long	9.0±0.5	68±3	2.5±0.1	3.0以下 3.0 or below	0.6±0.05

■定格 Ratings

タイプ No. Type No.	公称動作温度 Rated functioning temperature [Tf] (°C)	動作温度 Functioning temperature (°C)	ホールディング テンプ Holding temperature [Th, Tc] (°C)	最高使用温度 Maximum use temperature ^{※2} (°C)	マックステンプ リミット Maximum temperature limit [Tm] (°C)	電気定格 Electrical rating		規格取得 Safety standard approval				
						電流 Ampere (A)	電圧 Voltage (V)	PSE	UL	cUL (CSA) ※1	VDE	CCC
12G	65	62±3	49	42	200	1.5	AC250	●	●	●	●	●
12Y	76	72±3	57	52	200	2	AC250	●	●	●	●	●
12E	108	104±3	88	82	200	2	AC250	●	●	●	●	●
122	115	112±3	89	89	200	2	AC250	●	●	● ^{※1}	●	●
12X	133	129±3	116	92	200	2	AC250	●	●	●	●	●
			110	87		3.5	AC125	●	●	●	●	—
			110	87		3.5	DC50	—	●	●	●	—
12M	139	135±3	122	117	200	1.5	AC250	●	●	●	●	●
			67	60		7	DC50	—	●	●	●	—
12J	145	141±3	125	115	200	2	AC250	●	●	●	●	●

UL, cUL: E50082 CSA: LR40743 VDE: 923000-1171-0012

※1: CSAでの取得となります。

※1: Certified by CSA

※2: Maximum allowable normal use temperature

・動作温度は、0.1A以下の電流で1分間に1°C上昇するオイル中で測定されたものです。

・ホールディングテンプは、UL・cUL(CSA)・CCCで設定されている定格です。

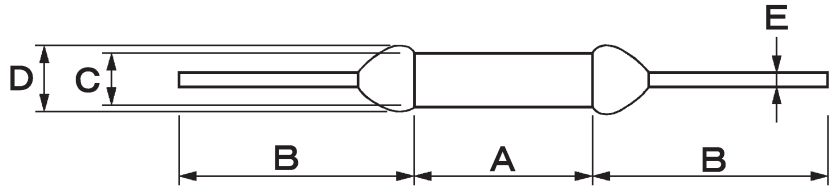
・Functioning temperature is measured with silicone oil bath of which temperature is increased at the rate of 1°C/min. Detecting current is 0.1A or less.

・Holding temperature is applicable to UL, cUL (CSA) and CCC respectively.

17 Series



Dimensions



Dimensions (mm)					
Lead length	A	B	C	D	E
Regular	9.0± 0.5	35.5± 3	2.5± 0.1	3.0 or bebw	0.6± 0.05

Ratings

Type No.	Rated functioning temperature T _f ()	Functioning temperature ()	T _h ()	Max. use temp *1 ()	T _m ()	Electrical rating		PSE	UL c-UL	VDE	CCC
						Ampere (A)	Voltage (V)				
17R	102	98 ± 3	70	63	200	4.5	AC250	JET5267-32001-2005	E50082	923000-1171-0027	2011010205519861
17E	108	105 ± 3	79	71		4.5	AC250				
17Z	115	112 ± 3	85	78		5	AC250				
17T	134	130 ± 3	115	109		2	AC250	JET5267-32001-1005			
17M	139	135 ± 3	118	112		2.4	AC250				
17J	145	141 ± 3	126	121		2.1	AC250	JET5267-32001-1006			

Functioning temperature is measured with silicone oil bath of which temperature is increased at the rate of 1°C/min.

Detecting current is 0.1A or less.

*1:Maximum allowable normal use temperature

TERMS

- Rated functioning temperature (T_f)
The symbol is provided T_f in each standard of UL, VDE, CCC, and IEC.
- Holding temperature (T_h)
The highest temperature of the thermal cutoff at which it will not open the circuit for 168 hours while passing rated current. The symbol is provided T_h by the standard conforming IEC60691.
- Maximum temperature limit (T_m)
The highest temperature at which the thermal cutoff does not have any damage and re-continuity for 10 minutes without load after it functioned. The symbol is provided T_m by the standard conforming IEC60691.

Rating and data mentioned above are based on prototype. They are subject to change without notice.



Uchihashi Estec Co.,Ltd.

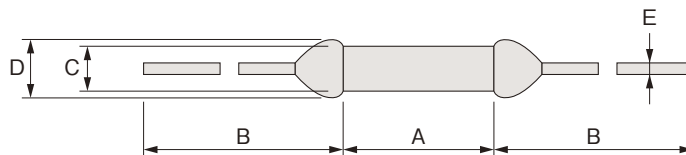
<http://www.uchihashi.co.jp/english/>

- Head Quarters / Overseas Sales Section
9-14, Imazu-Kita 2-chome, Tsurumi-ku, Osaka 538-0041 Japan
TEL (06)6962-6666(INT-81-6-6962-6666)
FAX (06)6962-6668(INT-81-6-6962-6668)

22シリーズ 22 Series



上記写真は22JRです。
The photo of 22JR is shown.



■寸法 Dimensions

種類 Lead length	寸法 Dimensions (mm)				
	A	B	C	D	E
レギュラー Regular	11.5±0.5	37±3	3.3±0.2	3.6以下 3.6 or below	1.0±0.05
ロング Long	11.5±0.5	67±3	3.3±0.2	3.6以下 3.6 or below	1.0±0.05

■定格 Ratings

タイプ No. Type No.	公称動作温度 Rated functioning temperature [Tf] (°C)	動作温度 Functioning temperature (°C)	ホールディング テンプ Holding temperature [Th, Tc] (°C)	最高使用温度 Maximum use temperature ^{※2} (°C)	マックステンプ リミット Maximum temperature limit [Tm] (°C)	電気定格 Electrical rating		規格取得 Safety standard approval				
						電流 Ampere (A)	電圧 Voltage (V)	PSE	UL	cUL (CSA) ※1	VDE	CCC
22YR	76	72±3	56	49	200	4	AC250	●	●	●	●	●
			55	48		5	AC125	●	●	●	●	—
22ER	108	104±3	89	81	200	4	AC250	●	●	●	●	●
			87	79		5	AC125	●	●	●	●	—
222R	115	112±3	92	89	200	5	AC250	●	●	● ^{※1}	●	●
			83	83		7	AC125	—	●	● ^{※1}	●	—
22XR	133	129±3	117	91	200	4	AC250	●	●	●	●	●
			110	84		7	AC125	●	●	●	●	—
22MR	139	135±3	122	114	200	2.5	AC250	●	●	●	●	●
			95	57		14	DC50	—	●	●	●	—
22JR	145	141±3	125	115	200	3.5	AC250	●	●	●	●	●
			113	90		7	AC125	●	●	●	●	—

UL, cUL: E50082 CSA: LR40743 VDE: 923000-1171-0002

※1: CSAでの取得となります。

※1: Certified by CSA

※2: Maximum allowable normal use temperature

・動作温度は、0.1A以下の電流で1分間に1°C上昇するオイル中で測定されたものです。

・ホールディングテンプは、UL・cUL(CSA)・CCCで設定されている定格です。

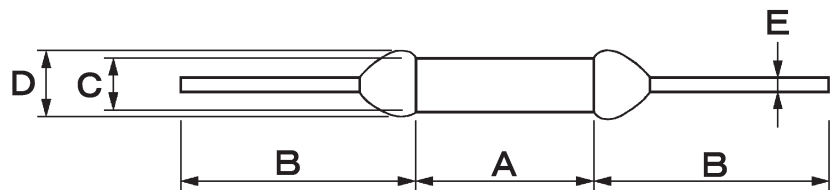
・Functioning temperature is measured with silicone oil bath of which temperature is increased at the rate of 1°C/min. Detecting current is 0.1A or less.

・Holding temperature is applicable to UL, cUL (CSA) and CCC respectively.

27 Series



Dimensions



Dimensions (mm)					
Lead length	A	B	C	D	E
Regular	11.5± 0.5	34.3± 3	3.3± 0.2	3.6 or below	1.0± 0.05

Ratings

Type No.	Rated functioning temperature T _f ()	Functioning temperature ()	T _h ()	Max. use temp ^{*1} ()	T _m ()	Electrical rating		PSE	UL c-UL	VDE	CCC
						Ampere (A)	Voltage (V)				
27R	102	98 ± 3	54	48	200	10 ^{*2}	AC250	JET5267-32001-2006	E50082	923000-1171-0028	2011010205519862
27E	108	105 ± 3	69	62		10	AC250				
272	115	112 ± 3	78	71		10	AC250				
27T	134	130 ± 3	107	102		5.5	AC250	JET5267-32001-2003			
27M	139	135 ± 3	111	105		6.5	AC250				
27J	145	141 ± 3	123	118		5	AC250	JET5267-32001-2004			

Functioning temperature is measured with silicone oil bath of which temperature is increased at the rate of 1°C/min.
Detecting current is 0.1A or less.

*1:Maximum allowable normal use temperature

*2:Approval by VDE under 250V/9A

TERMS

- Rated functioning temperature (T_f)
The symbol is provided T_f in each standard of UL, VDE, CCC, and IEC.
- Holding temperature (T_h)
The highest temperature of the thermal cutoff at which it will not open the circuit for 168 hours while passing rated current. The symbol is provided T_h by the standard conforming IEC60691.
- Maximum temperature limit (T_m)
The highest temperature at which the thermal cutoff does not have any damage and re-continuity for 10 minutes without load after it functioned. The symbol is provided T_m by the standard conforming IEC60691.

Rating and data mentioned above are based on prototype. They are subject to change without notice.



Uchihashi Estec Co.,Ltd.

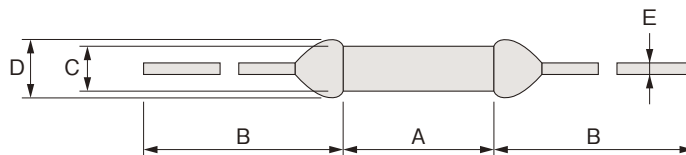
<http://www.uchihashi.co.jp/english/>

- Head Quarters / Overseas Sales Section
9-14, Imazu-Kita 2-chome, Tsurumi-ku, Osaka 538-0041 Japan
TEL (06)6962-6666(INT-81-6-6962-6666)
FAX (06)6962-6668(INT-81-6-6962-6668)

32シリーズ 32 Series



上記写真は32Mです。
The photo of 32M is shown.



■寸法 Dimensions

種類 Lead length	寸法 Dimensions (mm)				
	A	B	C	D	E
レギュラー Regular	6.0±0.5	39±3	2.0±0.1	2.3以下 2.3 or below	0.53±0.02
ロング Long	6.0±0.5	69±3	2.0±0.1	2.3以下 2.3 or below	0.53±0.02

■定格 Ratings

タイプ No. Type No.	公称動作温度 Rated functioning temperature [Tf] (°C)	動作温度 Functioning temperature (°C)	ホールディング テンプ Holding temperature [Th, Tc] (°C)	最高使用温度 Maximum use temperature ^{※2} (°C)	マックステンプ リミット Maximum temperature limit [Tm] (°C)	電気定格 Electrical rating		規格取得 Safety standard approval				
						電流 Ampere (A)	電圧 Voltage (V)	PSE	UL	cUL (CSA) ※1	VDE	CCC
32E	108	104±3	92	86	200	1	AC250	●	●	●	●	●
			88	82		2	AC125	—	●	●	●	—
32Z	115	112±3	89	89	200	1	AC250	●	●	● ^{※1}	●	●
						2	AC125	—	●	● ^{※1}	●	—
32X	133	129±3	119	109	200	1	AC250	●	●	●	●	●
			115	106		2	AC125	—	●	●	●	—
32M	139	135±3	118	118	200	1	AC250	●	●	●	●	●
32J	145	141±3	127	122	200	0.8	AC250	●	●	●	●	●
			120	115		2	AC125	—	●	●	●	—

UL, cUL: E50082 CSA: LR40743 VDE: 923000-1171-0003

※1: CSAでの取得となります。

※1: Certified by CSA

※2: Maximum allowable normal use temperature

・動作温度は、0.1A以下の電流で1分間に1°C上昇するオイル中で測定されたものです。

・ホールディングテンプは、UL・cUL(CSA)・CCCで設定されている定格です。

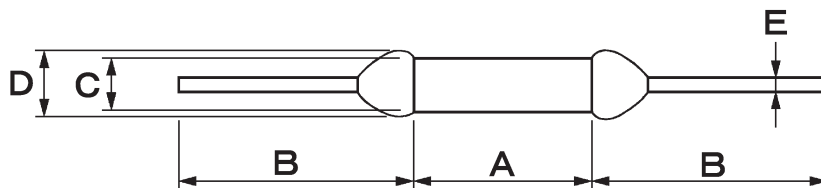
・Functioning temperature is measured with silicone oil bath of which temperature is increased at the rate of 1°C/min. Detecting current is 0.1A or less.

・Holding temperature is applicable to UL, cUL (CSA) and CCC respectively.

36 Series



Dimensions



Dimensions (mm)					
Lead length	A	B	C	D	E
Regular	60± 0.5	37± 3	20± 0.1	2.3 or below	0.53± 0.02

Ratings

Type No.	Rated functioning temperature Tf ()	Functioning temperature ()	Th ()	Max. use temp ^{*1} ()	Tm ()	Electrical rating		PSE	UL c-UL	VDE	CCC
						Ampere (A)	Voltage (V)				
36R	102	98 ± 3	78	71	200	2	AC250	JET5267-32001-1004	E50082	923000-1171-0029	2011010205519863
36E	108	105 ± 3	89	81		2	AC250				Under Approval
362	115	112 ± 3	97	90		2	AC250				2011010205519863
36T	134	130 ± 3	117	111		1.3	AC250	JET5267-32001-1005			
36M	139	135 ± 3	123	117		1.3	AC250	JET5267-32001-1006			
36J	145	141 ± 3	128	123		1.3	AC250	JET5267-32001-1006			

Functioning temperature is measured with silicone oil bath of which temperature is increased at the rate of 1°C/min.
Detecting current is 0.1A or less.

*1:Maximum allowable normal use temperature

TERMS

- Rated functioning temperature (Tf)
The symbol is provided Tf in each standard of UL, VDE, CCC, and IEC.
- Holding temperature (Th)
The highest temperature of the thermal cutoff at which it will not open the circuit for 168 hours while passing rated current. The symbol is provided Th by the standard conforming IEC60691.
- Maximum temperature limit (Tm)
The highest temperature at which the thermal cutoff does not have any damage and re-continuity for 10 minutes without load after it functioned. The symbol is provided Tm by the standard conforming IEC60691.

Rating and data mentioned above are based on prototype. They are subject to change without notice.



Uchihashi Estec Co.,Ltd.

<http://www.uchihashi.co.jp/english/>

- Head Quarters / Overseas Sales Section
9-14, Imazu-Kita 2-chome, Tsurumi-ku, Osaka 538-0041 Japan
TEL (06)6962-6666(INT-81-6-6962-6666)
FAX (06)6962-6668(INT-81-6-6962-6668)

ELCUT

THERMAL CUTOFFS

37MT (HF)

RoHS
Compliant

Halogen
Free

FEATURES

- The environment-friendly product which does not contain cadmium and lead.

IMPORTANT NOTICE

Read Standard Specification and Instruction Manual for use throughly.

TERMS

- **Rated Functioning Temperature (T_f)**
The acceptable tolerance is +0,-10°C except PSE. The one for PSE is ±7 °C
- **Holding Temperature (UL,cUL:Th,CCC:T_c)**
The highest temperature of the thermal cutoff at which it will not open the circuit for 168 hours while passing rated current.
- **Maximum Temperature Limit (T_m)**
The highest temperature at which continuity does not occur for 10 minutes after the fusing off of the thearmal cutoff.

■ Ratings

Type No.	Suffix	Rated Functioning Temperature T _f (°C)	Cut-off Temperature (°C)	T _h T _c (°C)	T _m (°C)	Electrical Rating		UL	cUL	VDE	PSE
						Ampere (A)	Voltage (V _{DC})				
37M	T	139	135 ± 3	85 200	200	8	50	●	●	●	-

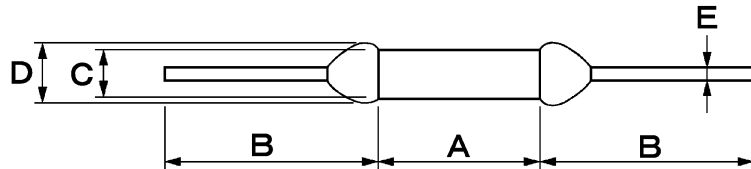
UL,cUL:E50082 VDE:923000-1171-0014

Cut-off temperature is measured with silicone oil bath of which temperature is increased at the rate of 1°C/min. Detecting current is 0.1A or less.

T_h and T_c are for cUL(CSA) respectively.

HF, following the type number, stands for "halogen-free".

■ Dimensions



Dimensions (mm)					
Size	A	B	C	D	E
Regular	6.0 ± 0.5	39 ± 3	2.0 ± 0.1	2.3 or below	0.7 ± 0.05

Halogen-free

The definition of "halogen-free": Neither bromine (Br) nor chlorine(Cl) is intentionally added in a thermal cutoffs itself. The concentration of bromine or chlorine shall not individually exceed maximum of 900ppm.

The total concentration of bromine and chlorine shall not exceed maximum of 1500ppm.

Uchihashi Estec Co.,Ltd.

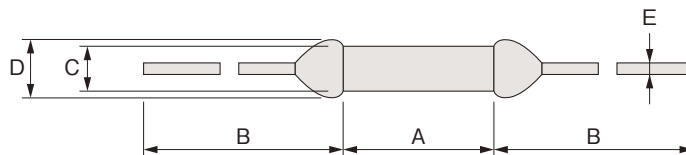
● Head Quarters / Overseas Sales Section

9-14,Imazu-Kita 2-chome,Tsurumi-ku,Osaka 538-0041 Japan
TEL (06)6962-6666(INT-81-6-6962-6666)
FAX (06)6962-6668(INT-81-6-6962-6668)

44シリーズ 44 Series



上記写真は44Kです。
The photo of 44K is shown.



■寸法 Dimensions

種類 Lead length	寸法 Dimensions (mm)				
	A	B	C	D	E
レギュラー Regular	6.0±0.5	39±3	1.65±0.1	2.0以下 2.0 or below	0.53±0.02
ロング Long	6.0±0.5	69±3	1.65±0.1	2.0以下 2.0 or below	0.53±0.02

■定格 Ratings

タイプ No. Type No.	公称動作温度 Rated functioning temperature [Tf] (°C)	動作温度 Functioning temperature (°C)	ホールディング テンプ Holding temperature [Th, Tc] (°C)	最高使用温度 Maximum use temperature ^{※2} (°C)	マックステンプ リミット Maximum temperature limit [Tm] (°C)	電気定格 Electrical rating		規格取得 Safety standard approval				
						電流 Ampere (A)	電圧 Voltage (V)	PSE	UL	cUL (CSA) ※1	VDE	CCC
44E	108	104±3	94	76	200	0.5	AC250	●	●	●	●	●
			91	76		1	AC125	—	●	●	●	—
			82	61		2.5	DC50	—	●	●	●	—
442	115	112±3	99	89	200	1	AC250	●	●	● ^{※1}	●	●
				71		1.5	AC125	—	●	● ^{※1}	●	—
			84	3.5		AC50	—	●	● ^{※1}	●	—	
				3.5		DC50	—	●	● ^{※1}	—	—	
44X	133	129±3	118	109	200	0.5	AC250	●	●	●	●	●
			116	107		1.5	AC125	—	●	●	●	—
			104	95		3.5	DC50	—	●	●	●	—
44K	150	143±3	132	124	200	0.5	AC250	●	●	●	●	●

UL, cUL: E50082 CSA: LR40743 VDE: 923000-1171-0004

※1: CSAでの取得となります。

※1: Certified by CSA

※2: Maximum allowable normal use temperature

・動作温度は、0.1A以下の電流で1分間に1°C上昇するオイル中で測定されたものです。

・ホールディングテンプは、UL・cUL(CSA)・CCCで設定されている定格です。

・Functioning temperature is measured with silicone oil bath of which temperature is increased at the rate of 1°C/min. Detecting current is 0.1A or less.

・Holding temperature is applicable to UL, cUL (CSA) and CCC respectively.



ELCUT

THERMAL CUTOFFS

47MT (HF)

RoHS
Compliant

Halogen
Free

FEATURES

- The environment-friendly product which does not contain cadmium and lead.

IMPORTANT NOTICE

Read Standard Specification and Instruction Manual for use throughly.

TERMS

- **Rated Functioning Temperature (T_f)**
The acceptable tolerance is +0,-10℃ except PSE. The one for PSE is 7℃
- **Holding Temperature (UL,cUL:T_h,CCC:T_c)**
The highest temperature of the thermal cutoff at which it will not open the circuit for 168 hours while passing rated current.
- **Maximum Temperature Limit (T_m)**
The highest temperature at which continuity does not occur for 10 minutes after the fusing off of the thermal cutoff.

■ Ratings

Type No.	Suffix	Rated Functioning Temperature T _f (°C)	Cut-off Temperature (°C)	T _h T _c (°C)	T _m (°C)	Electrical Rating		UL	cUL	VDE	PSE
						Ampere (A)	Voltage (V)				
47M	T	139	135±3	82	200	6	DC50	●	●	●	-

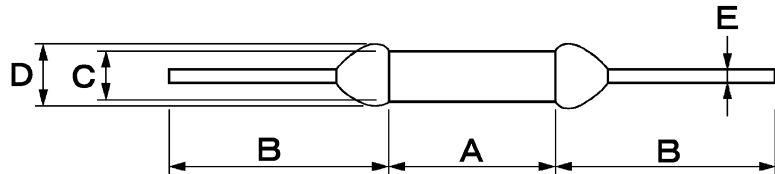
UL,cUL:E50082, VDE:923000-1171-0018

Cut-off temperature is measured with silicone oil bath of which temperature is increased at the rate of 1℃/min. Detecting current is 0.1A or less.

T_h and T_c are for cUL respectively.

HF, following the type number, stands for "halogen-free".

■ Dimensions



Dimensions (mm)					
Size	A	B	C	D	E
Regular	6.0±0.5	39±3	1.65±0.1	2.0 or below	0.60±0.05

Halogen-free

The definition of "halogen-free": Neither bromine (Br) nor chlorine(Cl) is intentionally added in a thermal cutoffs itself. The concentration of bromine or chlorine shall not individually exceed maximum of 900ppm.

The total concentration of bromine and chlorine shall not exceed maximum of 1500ppm.

Uchihashi Estec Co.,Ltd.

● Head Quarters / Overseas Sales Section

9-14,Imazu-Kita 2-chome,Tsurumi-ku,Osaka 538-0041 Japan
TEL (06)6962-6666(INT-81-6-6962-6666)
FAX (06)6962-6668(INT-81-6-6962-6668)