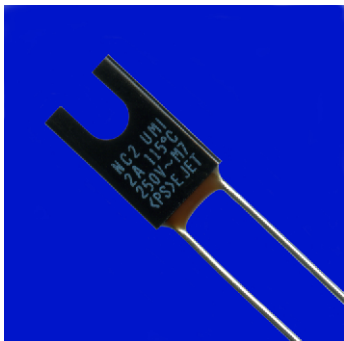


# ELCUT

## THERMAL CUTOFFS

# NC Series



### FEATURES

- NC Series is an environment-friendly product which does not contain cadmium and lead.

### IMPORTANT NOTICE

Read Standard Specification and Instruction Manual for use throughly.

### TERMS

- **Rated Functioning Temperature (Tf)**  
The acceptable tolerance is +0,-10°C except PSE. The one for PSE is ±7 °C
- **Holding Temperature (UL,cUL:Th, CCC:Tc)**  
The highest temperature of the thermal cutoff at which it will not open the circuit for 168 hours while passing rated current.
- **Maximum Temperature Limit (Tm)**  
The highest temperature at which continuity does not occur for 10 minutes after the fusing off of the thermal cutoff.

### ■ Ratings

Type No.	Rated Functioning Temperature Tf (°C)	Cut-off Temperature (°C)	Th Tc (°C)	Max. Use Temp. *1 (°C)	Tm (°C)	Electrical Rating		UL	cUL	VDE	CCC	PSE
						Ampere (A)	Voltage (V)					
NC2	115	111 ± 3	92	77	200	2.0	AC250	●	●	●	●	●
			74	58		3.5	AC125				-	-
			66	49		4.0	DC50				-	-
NCX	133	129 ± 3	110	95	200	2.0	AC250	●	●	●	●	●
			91	77		3.5	AC125				-	-
			83	68		4.0	DC50				-	-

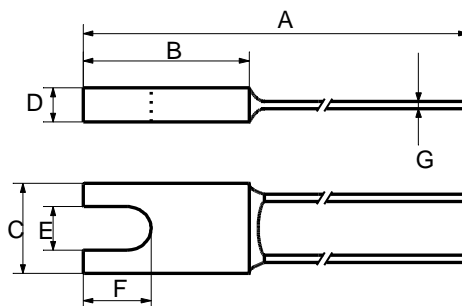
UL,C-UL:E50082 VDE:923000-1171-0021

Cut-off temperature is measured with silicone oil bath of which temperature is increased at the rate of 1°C/min. Detecting current is 0.1A or less.

Th and Tc are for cUL(CSA) and CCC respectively.

\*1:Maximum allowable normal use temperature

### ■ Dimensions



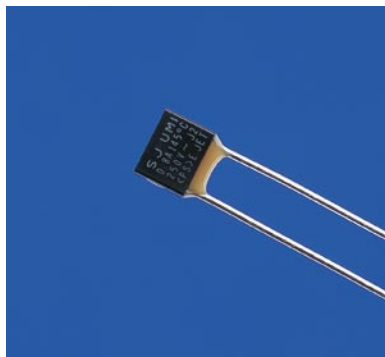
Dimensions (mm)						
A	B	C	D	E	F	G
47.0 ± 3.0	11.0 ± 0.5	6.7 ± 0.5	2.5 ± 0.3	3.2 ± 0.3	4.5 ± 0.2	0.58 ± 0.05

## Uchihashi Estec Co.,Ltd.

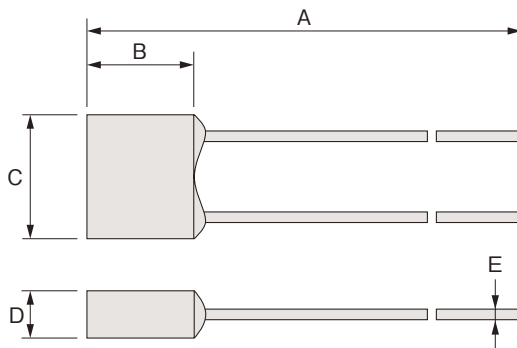
### ● Head Quarters / Overseas Sales Section

9-14,Imazu-Kita 2-chome,Tsurumi-ku,Osaka 538-0041 Japan  
 TEL (06)6962-6666(INT-81-6-6962-6666)  
 FAX (06)6962-6668(INT-81-6-6962-6668)

# Sシリーズ S Series



上記写真はSJです。  
The photo of SJ is shown.



## ■寸法 Dimensions

種類 Lead length	寸法 Dimensions (mm)				
	A	B	C	D	E
レギュラー Regular	55±3	4.0±0.5	5.2±0.5	2.2±0.3	0.53±0.02
ロング Long	70±3	4.0±0.5	5.2±0.5	2.2±0.3	0.53±0.02

## ■定格 Ratings

タイプ No. Type No.	公称動作温度 Rated functioning temperature [Tf] (°C)	動作温度 Functioning temperature (°C)	ホールディング テンプ Holding temperature [Th, Tc] (°C)	最高使用温度 Maximum use temperature <sup>※2</sup> (°C)	マックステンプ リミット Maximum temperature limit [Tm] (°C)	電気定格 Electrical rating		規格取得 Safety standard approval				
						電流 Ampere (A)	電圧 Voltage (V)	PSE	UL	cUL (CSA) ※1	VDE	CCC
SE	108	104±3	92	85	200	1	AC250	●	●	●	●	●
			89	82		1.5	AC125	—	●	●	●	—
S2	115	112±3	89	89	200	1	AC250	●	●	● <sup>※1</sup>	●	●
						1.5	AC125	—	●	● <sup>※1</sup>	●	—
SX	133	129±3	116	108	200	1	AC250	●	●	●	●	●
			115	107		1.5	AC125	—	●	●	●	—
SJ	145	141±3	123	120	200	0.8	AC250	●	●	●	●	●

UL, cUL: E50082 CSA: LR57404 VDE: 923000-1171-0010

※1: CSAでの取得となります。

※1: Certified by CSA

※2: Maximum allowable normal use temperature

・動作温度は、0.1A以下の電流で1分間に1°C上昇するオイル中で測定されたものです。

・ホールディングテンプは、UL・cUL(CSA)・CCCで設定されている定格です。

・Functioning temperature is measured with silicone oil bath of which temperature is increased at the rate of 1°C/min. Detecting current is 0.1A or less.

・Holding temperature is applicable to UL, cUL (CSA) and CCC respectively.

## FEATURES

- The environment-friendly product which does not contain cadmium and lead.

## IMPORTANT NOTICE

Read Standard Specification and Instruction Manual for use throughly.

## TERMS

- **Rated Functioning Temperature (T<sub>f</sub>)**  
The acceptable tolerance is +0,-10°C except PSE. The one for PSE is ±7 °C
- **Holding Temperature (UL,cUL:Th,CCC:T<sub>c</sub>)**  
The highest temperature of the thermal cutoff at which it will not open the circuit for 168 hours while passing rated current.
- **Maximum Temperature Limit (T<sub>m</sub>)**  
The highest temperature at which continuity does not occur for 10 minutes after the fusing off of the thermal cutoff.

## ■ Ratings

Type No.	Rated Functioning Temperature T <sub>f</sub> (°C)	Cut-off Temperature (°C)	Th (°C)	Max. Use Temp. *1 (°C)	T <sub>m</sub> (°C)	Electrical Rating		UL	cUL	VDE	CCC	PSE
						Ampere (A)	Voltage (V)					
SC2	115	112 ± 3	95	89	200	1	AC250	●	-	●	●	●

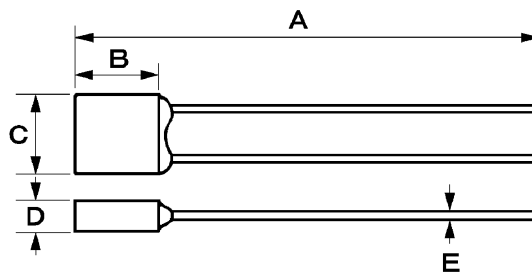
UL:E50082VDE:9230-1171-0025

Cut-off temperature is measured with silicone oil bath of which temperature is increased at the rate of 1°C/min. Detecting current is 0.1A or less.

Th and T<sub>c</sub> are for cUL(CSA) respectively.

\*1:Maximum allowable normal use temperature

## ■ Dimensions



Dimensions (mm)					
Size	A	B	C	D	E
Regular	55 ± 3	4.0 ± 0.5	5.2 ± 0.5	2.2 ± 0.3	0.53 ± 0.02

## Uchihashi Estec Co.,Ltd.

### ● Head Quarters / Overseas Sales Section

9-14,Imazu-Kita 2-chome,Tsurumi-ku,Osaka 538-0041 Japan  
TEL (06)6962-6666(INT-81-6-6962-6666)  
FAX (06)6962-6668(INT-81-6-6962-6668)

## FEATURES

- The environment-friendly product which does not contain cadmium and lead.

## IMPORTANT NOTICE

Read Standard Specification and Instruction Manual for use throughly.

## TERMS

- **Rated Functioning Temperature (T<sub>f</sub>)**  
The acceptable tolerance is +0,-10°C except PSE. The one for PSE is ±7 °C
- **Holding Temperature (UL,cUL:Th,CCC:T<sub>c</sub>)**  
The highest temperature of the thermal cutoff at which it will not open the circuit for 168 hours while passing rated current.
- **Maximum Temperature Limit (T<sub>m</sub>)**  
The highest temperature at which continuity does not occur for 10 minutes after the fusing off of the thermal cutoff.

## ■ Ratings

Type No.	Rated Functioning Temperature T <sub>f</sub> (°C)	Cut-off Temperature (°C)	Th T <sub>c</sub> (°C)	Max. Use Temp. (°C) <sup>*1</sup>	T <sub>m</sub> (°C)	Electrical Rating		UL	cUL	VDE	CCC	PSE
						Ampere (A)	Voltage (V)					
SKM	139	135 ± 3	124	113	200	0.8	AC250	●	●	●	●	●

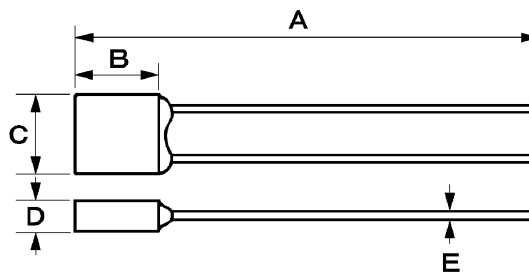
UL:E50082VDE:9230-1171-0019

Cut-off temperature is measured with silicone oil bath of which temperature is increased at the rate of 1°C/min. Detecting current is 0.1A or less.

Th and T<sub>c</sub> are for cUL(CSA) respectively.

\*1:Maximum allowable normal use temperature

## ■ Dimensions



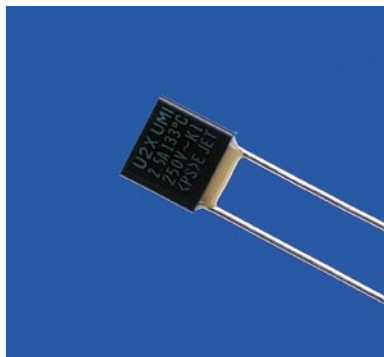
Dimensions (mm)					
Size	A	B	C	D	E
Regular	55 ± 3	4.0 ± 0.5	5.2 ± 0.5	2.2 ± 0.3	0.53 ± 0.02

## Uchihashi Estec Co.,Ltd.

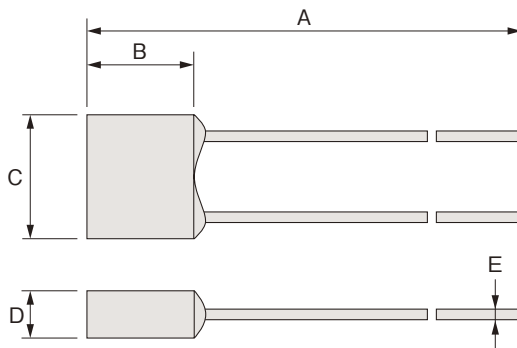
### ● Head Quarters / Overseas Sales Section

9-14,Imazu-Kita 2-chome,Tsurumi-ku,Osaka 538-0041 Japan  
 TEL (06)6962-6666(INT-81-6-6962-6666)  
 FAX (06)6962-6668(INT-81-6-6962-6668)

# U2シリーズ U2 Series



上記写真はU2Xです。  
The photo of U2X is shown.



## ■寸法 Dimensions

種類 Lead length	寸法 Dimensions (mm)				
	A	B	C	D	E
レギュラー Regular	55±3	5.7±0.5	6.6±0.5	2.5±0.3	0.53±0.02
ロング Long	70±3	5.7±0.5	6.6±0.5	2.5±0.3	0.53±0.02

## ■定格 Ratings

タイプ No. Type No.	公称動作温度 Rated functioning temperature [Tf] (°C)	動作温度 Functioning temperature (°C)	ホールディング テンプ Holding temperature [Th, Tc] (°C)	最高使用温度 Maximum use temperature <sup>※2</sup> (°C)	マックステンプ リミット Maximum temperature limit [Tm] (°C)	電気定格 Electrical rating		規格取得 Safety standard approval				
						電流 Ampere (A)	電圧 Voltage (V)	PSE	UL	cUL (CSA) ※1	VDE	CCC
U2E	108	104±3	88	81	200	2	AC250	●	●	●	●	●
U22	115	112±3	89	89	200	2.5	AC250	●	●	● <sup>※1</sup>	●	●
U2X	133	129±3	112	102	200	2.5	AC250	●	●	●	●	●
U2J	145	141±3	120	115	200	2.5	AC250	●	●	●	●	●
			92	87		5	AC125	—	●	●	●	—

UL, cUL: E50082 CSA: LR57404 VDE: 923000-1171-0011

※1: CSAでの取得となります。

※1: Certified by CSA

※2: Maximum allowable normal use temperature

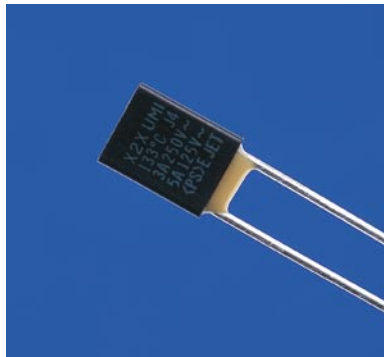
・動作温度は、0.1A以下の電流で1分間に1°C上昇するオイル中で測定されたものです。

・ホールディングテンプは、UL・cUL(CSA)・CCCで設定されている定格です。

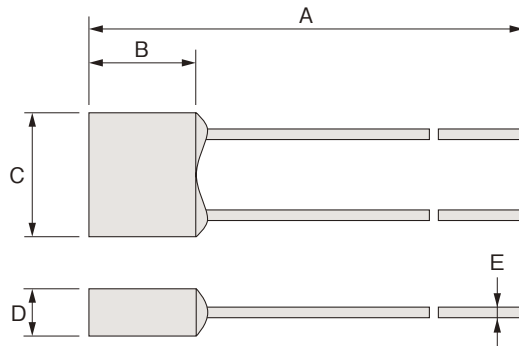
・Functioning temperature is measured with silicone oil bath of which temperature is increased at the rate of 1°C/min. Detecting current is 0.1A or less.

・Holding temperature is applicable to UL, cUL (CSA) and CCC respectively.

# Xシリーズ X Series



上記写真はX2Xです。  
The photo of X2X is shown.



## ■寸法 Dimensions

種類 Lead length	寸法 Dimensions (mm)				
	A	B	C	D	E
レギュラー Regular	55±3	8.5±0.5	6.6±0.5	2.5±0.3	0.7±0.05
ロング Long	70±3	8.5±0.5	6.6±0.5	2.5±0.3	0.7±0.05

## ■定格 Ratings

タイプ No. Type No.	公称動作温度 Rated functioning temperature [Tf] (°C)	動作温度 Functioning temperature (°C)	ホールディング テンプ Holding temperature [Th, Tc] (°C)	最高使用温度 Maximum use temperature <sup>※2</sup> (°C)	マックステンプ リミット Maximum temperature limit [Tm] (°C)	電気定格 Electrical rating		規格取得 Safety standard approval				
						電流 Ampere (A)	電圧 Voltage (V)	PSE	UL	cUL (CSA) ※1	VDE	CCC
X2E	108	104±3	87	79	200	3	AC250	●	●	●	●	●
X22	115	112±3	89	89	200	3	AC250	●	●	● <sup>※1</sup>	●	●
						5	AC125	—	●	● <sup>※1</sup>	●	—
X2X	133	129±3	113	104	200	3	AC250	●	●	●	●	●
			104	96		5	AC125	●	●	●	●	—

UL, cUL: E50082 CSA: LR57404 VDE: 923000-1171-0013

※1: CSAでの取得となります。

※1: Certified by CSA

※2: Maximum allowable normal use temperature

・動作温度は、0.1A以下の電流で1分間に1°C上昇するオイル中で測定されたものです。

・ホールディングテンプは、UL・cUL(CSA)・CCCで設定されている定格です。

・Functioning temperature is measured with silicone oil bath of which temperature is increased at the rate of 1°C/min. Detecting current is 0.1A or less.

・Holding temperature is applicable to UL, cUL (CSA) and CCC respectively.